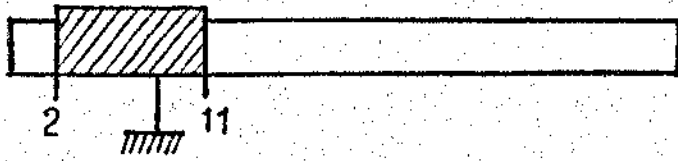


"PHILTRON-Export"



	F	OSC.	ACC.
P.O.	574 kc/s	BOB.	CADRE
M.W.	1400 kc/s	Tr. C.V.	Tr. C.V.
O.C.2	3,1 Mc/s	Bob.	Bob.
O.C.1	7,5 Mc/s		Bob.

F. Osc. > F. Acc.
MF = 480 kc/s

